

Pimoroni Tiny 2350

18x21.3mm

RP2350A

4MB Flash

USB-C

RGB LED

Reset Button

User/Boot Button

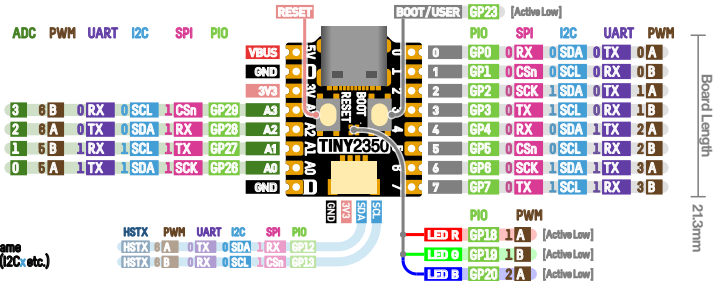
QW/ST Connector

16 pins (12 GPIO)

Input: 3V-5.5V

Board Width 18.0mm

Pins and Dims



KEY: **0 SDA** Function Name Peripheral (I2Cx etc.)