



150 Dodd Street SE
Marietta, GA. 30060

Phone: 770-973-6251
Fax: 678-401-3854

Email: info@mgs4u.com
Website: www.mgs4u.com

UHF female to UHF female Adapter (Better)



Technical Data Sheet

This UHF female to UHF female adapter (better) is one of several thousand RF products available from Max-Gain Systems, Inc. This adapter is an in-series coaxial adapter.

This adapter is made from a Solid Brass body that is machined and plated with Nickel for superior performance and value. This UHF female to UHF female adapter has a Delrin dielectric and a gold plated brass center pin. Both sides provide a UHF female side (also known as a SO-239 connection) is by far the most popular connection type used in Amateur Radio.

Material Specifications

UHF female to UHF female Adapter (Better)

Part Number 7517-16V

| Description | Material | Plating |
|-------------|----------|---------|
| Center Pin | Brass | Gold |
| Body | Brass | Nickel |
| Insulator | Delrin | White |

Mechanical Specifications

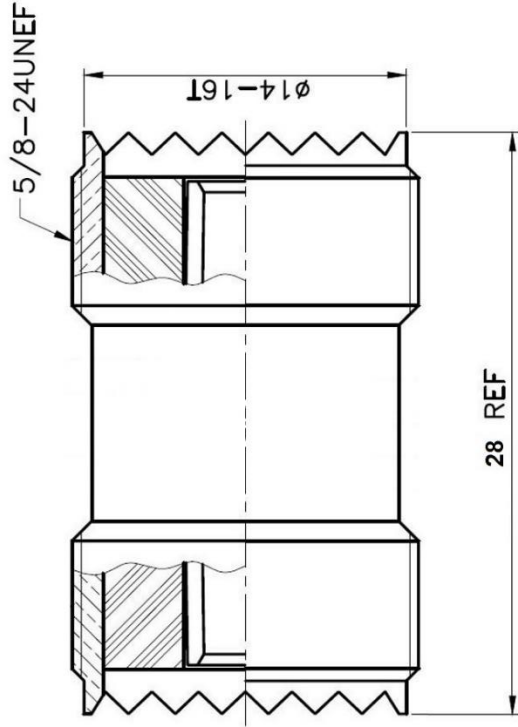
| Size | Dimension |
|--------|-------------------|
| Length | 1.1 in (28 mm) |
| Width | 0.61 in (15.5 mm) |
| Height | 0.61 in (15.5 mm) |
| Weight | 0.7 oz (20 g) |

Environmental Specifications

| Temperature | Spec |
|-----------------|-------------------|
| Operating Range | -65 to +165 deg C |

Compliance Certifications (see product page for current documentation)

Availability Click the following link (or enter part number in the “SEARCH” bar at the top of any page of the website) to obtain additional part information including price, inventory and certifications: <https://mgs4u.com/product/uhf-female-to-uhf-female-barrel-adapter-better-7517-16v/>



MGS MAX-GAIN SYSTEMS, INC.

Max-Gain Systems, Inc.
 150 Dodd Street SE, Marietta, GA. 30060
 Phone: (770) 973-6251 | Fax: (678) 401-3854
 Website: www.mgs4u.com | E-Mail: sales@mgs4u.com

TITLE: UHF female to UHF female Adapter

DRAWING NO: 7517-16V

FILE NO :

| NO. | DESCRIPTION | MATERIAL | FINISH | QTY | UNIT: mm | SCALE: . | UNLESS OTHERWISE SPECIFIED TOLERANCES | | | PART NO | DATE |
|-----|-----------------|----------|--------|-----|----------|----------|---------------------------------------|------|--------|----------|------|
| | | | | | | | 0.5-5 | 5-30 | 30-120 | | |
| 1 | | | | 1 | | | ±0.2 | ±0.4 | ±0.6 | | |
| 1 | | | | 1 | | | ±1.6 | ±2.4 | | APPROVED | DATE |
| 1 | | | | 1 | | | | | | CHECKED | DATE |
| 1 | PIN | BRASS | GOLD | 1 | | | | | | DRAWN | DATE |
| 1 | INSULATOR | DELIRIN | WHITE | 1 | | | | | | | |
| 1 | BODY | BRASS | NICKEL | 1 | | | | | | | |
| 1 | NO. DESCRIPTION | MATERIAL | FINISH | QTY | | | | | | | |