



150 Dodd Street SE
Marietta, GA. 30060

Phone: 770-973-6251
Fax: 678-401-3854

Email: info@mgs4u.com
Website: www.mgs4u.com

SMA male to SMA male Adapter



Technical Data Sheet

This SMA male to SMA male adapter is one of several thousand RF products available from Max-Gain Systems, Inc. This adapter is an in-series coaxial adapter.

This adapter is made from a Solid Brass body that is precision machined and plated with Gold for superior performance and value. This SMA male to SMA male adapter has a PTFE dielectric and a gold plated brass center pin. Both sides provide a SMA male whose plug and interior threads provide a sub-miniature and tight-locking connection for use at higher frequencies.

Material Specifications

Type SMA male to SMA male Adapter		Part Number 7816
Description	Material	Plating
Center Pin	Brass	Gold
Insulator	PTFE	White
Body	Brass	Gold

Mechanical Specifications

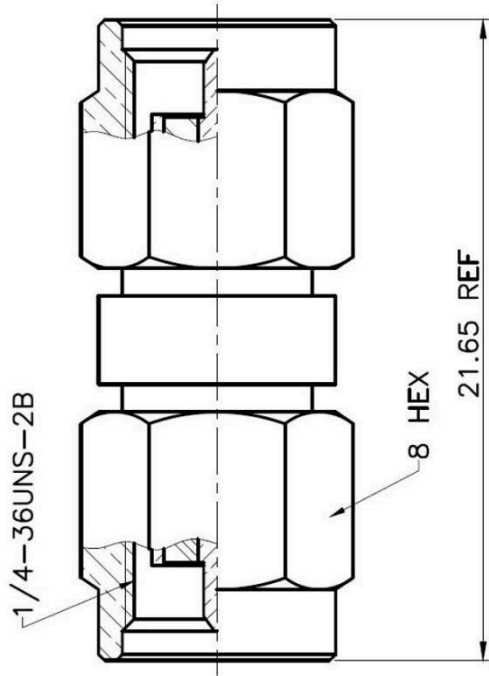
Size	Dimension
Length	0.85 in (21.75 mm)
Width	0.32 in (8 mm)
Height	0.32 in (8 mm)
Weight	0.2 oz (6 g)

Environmental Specifications

Temperature	Spec
Operating Range	-65 to +165 deg C

Compliance Certifications (see product page for current documentation)

Availability Click the following link (or enter part number in the “SEARCH” bar at the top of any page of the website) to obtain additional part information including price, inventory and certifications: <https://mgs4u.com/product/sma-male-to-sma-male-adapter-7816/?v=7516fd43adaa>



MGS MAX-GAIN SYSTEMS, INC.

Max-Gain Systems, Inc.
 150 Dodd Street SE, Marietta, GA. 30060
 Phone: (770) 973-6251 | Fax: (678) 401-3854
 Website: www.mgs4u.com | E-Mail: sales@mgs4u.com

TITLE: SMA male to SMA female Adapter

DRAWING NO: 7816

FILE NO : .

		PART NO	DATE
		APPROVED	DATE
		CHECKED	DATE
		DRAWN	DATE
UNLESS OTHERWISE SPECIFIED TOLERANCES 0.5-5 = ±0.2 5-30 = ±0.4 30-120 = ±0.6 120-315 = ±1.0 315-1000 = ±1.6 1000-2000 = ±2.4		UNIT: mm	
PIN	BRASS	1	GOLD
INSULATOR	TEFLON	1	WHITE
BODY	BRASS	1	GOLD
NO. DESCRIPTION	MATERIAL	QTY	FINISH
SCALE: .			