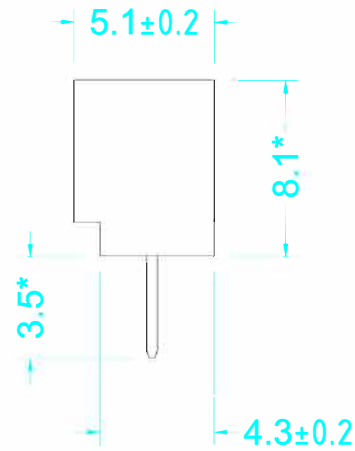
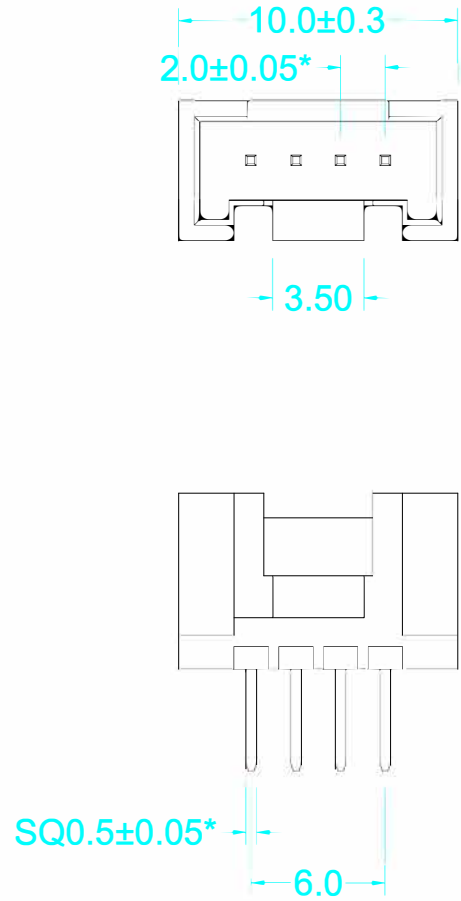
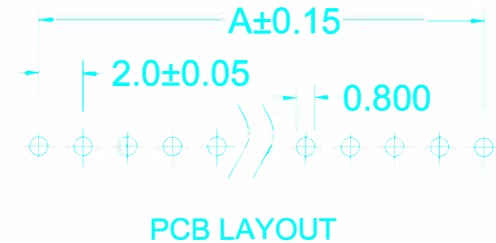





标记	版本	文件编号	变更前	变更后	日期	变更人
	A		/	新版图	2013.07.25	wzw



Performance characteristics:

- The dimensions with "*" are key control size
- Main body part material
Insulator: NYLON UL94V-0
Contact: Brass
- Plating
Contact: Tin-plated according to customer needs
- Electrical requirements:
Current rating: 2 A
Voltage rating: 250V
Contact resistance: $\leq 10 \text{ m}\Omega$
Insulation resistance: $\geq 1000 \text{ M}\Omega$
Withstanding voltage: 800 V AC, 60s
- Environment specification
Working temperature: $-25^\circ\text{C} \sim 85^\circ\text{C}$
Method of packing: 1000 pcs per bag



DRAWN	DATE	 SHENZHEN NS-TECH CO.,LTD.								
wzw	2013.07.25									
CHECKED	DATE	TITLE: 1125S-4P SPEC: 不打K 环保								
未注公差表 <table border="1"> <tr> <td>.X ±0.5</td> <td>X. ±5°</td> </tr> <tr> <td>.XX ±0.3</td> <td>.X ±3°</td> </tr> <tr> <td>.XXX ±0.1</td> <td>.XX ±1°</td> </tr> </table>	.X ±0.5	X. ±5°	.XX ±0.3	.X ±3°	.XXX ±0.1	.XX ±1°	APPROVED	DATE	PART NO.	
	.X ±0.5	X. ±5°								
	.XX ±0.3	.X ±3°								
	.XXX ±0.1	.XX ±1°								
			CLIENT P/N							
		UNIT: mm	SCALE: free	 						
		FILE NO.:NS-1125-W00008	REVA	HC						