



150 Dodd Street SE
Marietta, GA. 30060

Phone: 770-973-6251
Fax: 678-401-3854

Email: info@mgs4u.com
Website: www.mgs4u.com

BNC female to SMA female Adapter



Technical Data Sheet

This BNC female to SMA female adapter is one of several thousand RF products available from Max-Gain Systems, Inc. This adapter is a between series coaxial adapter.

This adapter is made from a Solid Brass body that is precision machined and plated with Nickel for superior performance and value. This BNC female to SMA female adapter has a PTFE dielectric and a gold plated brass center pin. The BNC female provides tabs or “bayonets” for quick and reliable connections and disconnections. The SMA female side’s jack and exterior threads provide a sub-miniature and tight-locking connection for use at higher frequencies.

Material Specifications

BNC female to SMA female Adapter		Part Number 7830
Description	Material	Plating
Center Pin	Brass	Gold
Insulator	PTFE	White
Body	Brass	Nickel
Insulator	Delrin	White

Mechanical Specifications

Size	Dimension
Length	0.98 in (25 mm)
Width	0.47 in (12.00 mm)
Height	0.47 in (12.00 mm)
Weight	0.3 oz (10 g)

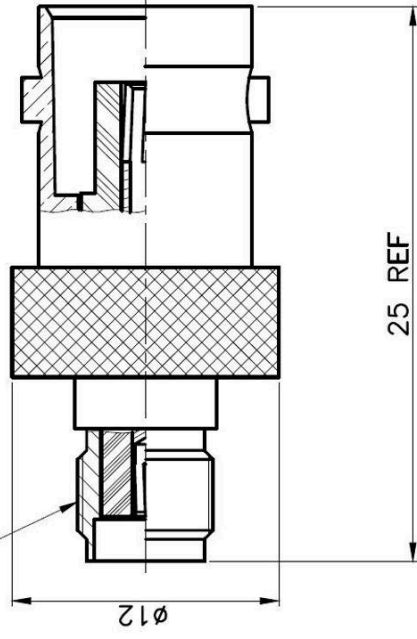
Environmental Specifications

Temperature	Spec
Operating Range	-65 to +165 deg C

Compliance Certifications (see product page for current documentation)

Availability Click the following link (or enter part number in the “SEARCH” bar at the top of any page of the website) to obtain additional part information including price, inventory and certifications: <https://mgs4u.com/product/bnc-female-to-sma-female-adapter-7830/?v=7516fd43adaa>

1/4-36UNS-2A



MGS MAX-GAIN SYSTEMS, INC.

Max-Gain Systems, Inc.
 150 Dodd Street SE, Marietta, GA, 30060
 Phone: (770) 973-6251 | Fax: (678) 401-3854
 Website: www.mgs4u.com | E-Mail: sales@mgs4u.com

TITLE: BNC female to SMA female

DRAWING NO: 7830

FILE NO : .

			PART NO	DATE
			APPROVED	DATE
			CHECKED	DATE
			DRAWN	DATE

UNLESS OTHERWISE SPECIFIED TOLERANCES			
0.5-5	±0.2		
5-30	±0.4		
30-120	±0.6		
120-315	±1		
315-1000	±1.6		
1000-2000	±2.4		

NO.	DESCRIPTION	MATERIAL	FINISH	QTY	UNIT: mm	SCALE: .
	INSULATOR	TEFLON	WHITE	1		
	PIN	BRASS	GOLD	1		
	INSULATOR	DELTRIN	WHITE	1		
	BODY	BRASS	NICKEL	1		