



150 Dodd Street SE
Marietta, GA. 30060

Phone: 770-973-6251
Fax: 678-401-3854

Email: info@mgs4u.com
Website: www.mgs4u.com

SMA female to SMA female Barrel Adapter



Technical Data Sheet

This SMA female to SMA female barrel adapter is one of several thousand RF products available from Max-Gain Systems, Inc. This adapter is an in-series coaxial adapter.

This adapter is made from a Solid Brass body that is machined and plated with Nickel for superior performance and value. This SMA female to SMA female barrel adapter has a PTFE dielectric and a gold plated brass center pin. Both sides provide a SMA female whose jack and exterior threads provide a sub-miniature and tight-locking connection for use at higher frequencies. This SMA female to SMA female barrel adapter is perfect for joining two sections of coaxial cable that terminate in SMA male connectors.

Material Specifications

SMA female to SMA female Barrel Adapter

Part Number 7817

Description	Material	Plating
Pin	Brass	Gold
Dielectric	PTFE	White
Body	Brass	Nickel

Mechanical Specifications

Size	Dimension
Length	0.5 in (12.6 mm)
Width	0.25 in (6.25 mm)
Height	0.25 in (6.25 mm)
Weight	<0.1 oz (<1 g)

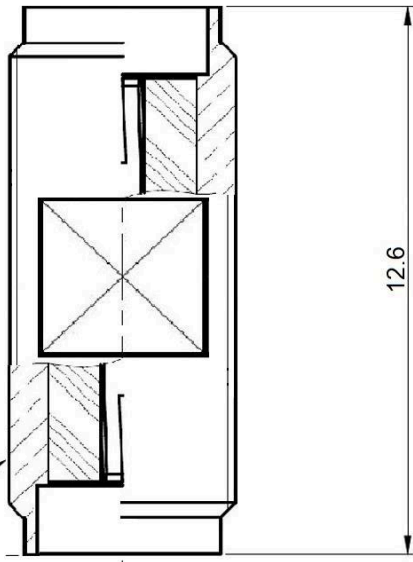
Environmental Specifications

Temperature	Spec
Operating Range	-65 to +165 deg C

Compliance Certifications (see product page for current documentation)

Availability Click the following link (or enter part number in the “SEARCH” bar at the top of any page of the website) to obtain additional part information including price, inventory and certifications: <https://mgs4u.com/product/sma-female-to-sma-female-barrel-adapter-7817/?v=7516fd43adaa>

1/4-36UNS-2A



MGS MAX-GAIN SYSTEMS, INC.

Max-Gain Systems, Inc.
 150 Dodd Street SE, Marietta, GA, 30060
 Phone: (770) 973-6251 | Fax: (678) 401-3854
 Website: www.mgs4u.com | E-Mail: sales@mgs4u.com

TITLE: SMA female to SMA female Barrel Adapter

DRAWING NO: 7817

FILE NO :

	PART NO	DATE
	APPROVED	DATE
	CHECKED	DATE
	DRAWN	DATE
UNLESS OTHERWISE SPECIFIED TOLERANCES 0.5-5 = ± 0.2 5-30 = ± 0.4 30-120 = ± 0.6 120-315 = ± 1 315-1000 = ± 1.6 1000-2000 = ± 2.4		
	UNIT: mm	
	SCALE: .	
NO.	DESCRIPTION	QTY
	CONTACT PIN	
	INSULATOR	
	BODY	
	BRASS	GOLD
	TEFLON	WHITE
	BRASS	NICKEL
	MATERIAL	FINISH