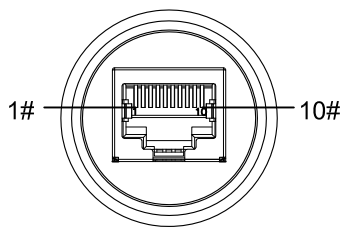
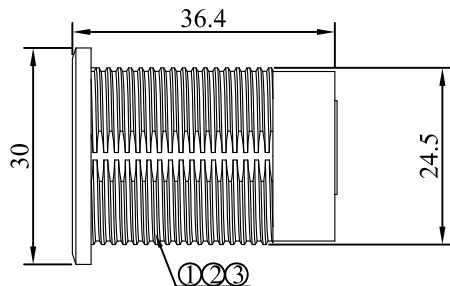


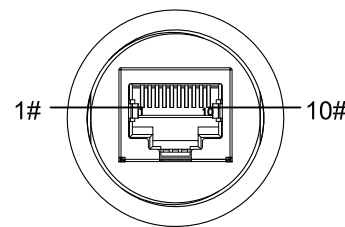
P1
10P 10C FEMALE



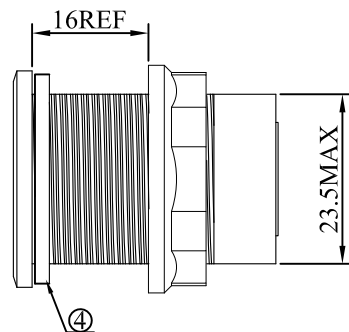
TOOL P/N:DC-241125-01



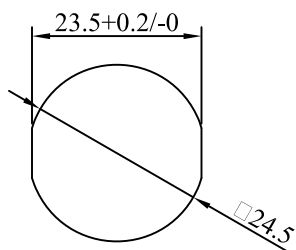
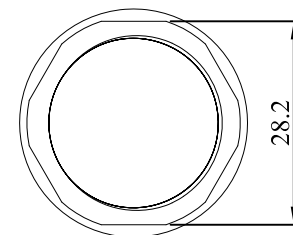
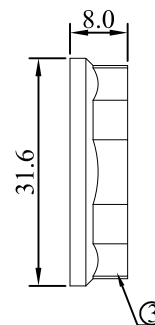
P2
10P 10C FEMALE



TOOL P/N:客供



安装扭入



Reference panel size

PIN ASSIGNMENT

P1	P2
1	1
2	2
3	3
4	4
5	5
6	6
7	7
8	8
9	9
10	10
S	S

NOTES:

- PIN ASSIGNMENT SEE TO WIRE LIST
- ELECTRICAL TEST CONDITION:
 - 100%OPEN,SHORT & MISWIRE TEST,
 - INSULATOR RESISTANCE:20 MOHM MIN.
DC 300V 0.01~0.03 SEC
 - CONTACT RESISTANCE:3 OHM MAX.

4	O-RING NBR 70A.	
3	ALL CONNECTORS OVERMOLD BLACK PVC 20P.	
2	10P 10C FEMALE.	
1	PCB SWITCHING.	
No.	Description	P/N

DWG NO:	PCM-S-0553	GOODS CODE		Draw	<i>Lu yangchun</i>	Date	2024/12/02
ITEM NO.		DRAWING EVIDENCE		Check		Date	
Goods NO.				Approval		Date	
Original NO.		Unit(mm)					

PREMIER CABLE MFG CO LTD

D		
C		
B		
VER.A	REVISE	Date.